



BY APPOINTMENT TO
HER MAJESTY THE QUEEN
FURNITURE MANUFACTURERS
STONEHAM PLC, SIDOUP, KENT

STONEHAM[®]

FINE FURNITURE SINCE 1864



DESIGNED FOR LIVING



Stonebridge Interiors



Stonebridge Interiors

Contents

Welcome	1
A family business since 1864	2
The Avant Garde Collection	4
Darwin/Holwood	6
Holwood	8
Elan	12
Autograph	13
Vibe	16
Cudham	20
Strata	24
Lullingstone	30
Aspen	32
Edwardian	36
Mode/TT/Pro	40
Ambience/TT/Pro	44
Touch	48
Infinity/TT/Pro	50
Diffuse	54
Flow	56
Fusion	58
Pitch	66
Ligna	68
Fahrenheit/TT/Pro	70
The Heritage Collection	72
Knole Painted	74
Penshurst Painted	76
Penshurst	80
Scotney	82
Ightham	88
Bewl	90
Marlborough	94
Beyond The Kitchen	96
It's All In The Detail	102
The Inside Story – Storage	105
Utility/Concealment	110
Control Technology	111
Work Surfaces	112
Implementation	114
Sustainability	116
Thank You	

Welcome to Stoneham kitchens...

...where the values we've been building into our bespoke kitchens for more than 150 years haven't changed. Every hand-built Stoneham kitchen is created using the finest woods and natural materials, the most innovative features and latest technology, supremely crafted to produce timeless design and dependable quality.

A family business since 1864

When you choose a Stoneham kitchen, you choose a commitment to quality, the most rigorous standards of workmanship and an approach to kitchen design and supply that is responsible, dependable and guaranteed to give a lifetime of service.

Each and every Stoneham kitchen is hand-built to order, by craftsmen who take enormous pride in combining their knowledge and skills with the very latest engineering techniques and technology. We work with you to design and create a kitchen that suits your lifestyle and lasts a lifetime.

Stoneham has been designing and creating beautiful furniture for over 150 years and has been at the forefront of bespoke kitchen design since the 1950s. Family owned for five generations, Stoneham is proud to deliver consistent craftsmanship, uncompromising quality and unfailing attention to detail.



Left to right: Mike Stoneham – Works Director, Howard Stoneham – Sales Director, Adrian Stoneham – Managing Director.



William Hone Stoneham started the business in 1864.



Stoneham premises in Reginald Square, Deptford, circa 1864-1884. E.G. Stoneham (Snr) is pictured outside the building (circa 1935).



E.G. Stoneham (Jnr) standing outside the E.G. Stoneham and Son Empire Works at Watson Street, Deptford (1926-1959). The building, originally cowsheds, was converted into a factory building.



A Stoneham delivery vehicle, circa 1954 featuring the slogan "Adds Grace and Space".



This rare picture, taken around 1940, shows the large force of female factory employees at the time working on the manufacture of gas rattles, ammunition boxes and aircraft for WWII.

The Avant Garde Collection

Modern living

The Stoneham Avant Garde Collection features over 30 kitchen ranges that combine the best features of traditional build techniques with innovative design, to create a stunning new contemporary classic.

The slick 'lay-on' door design creates a modern aesthetic, complemented by a unique combination of features including inlaid veneers, painted finishes and laminates with solid timber, glass, steel and aluminium.

A bespoke Stoneham Avant Garde kitchen can be created to fit around the trickiest of architectural features, using the very latest fittings and ingenious storage solutions for even the most awkward of spaces. Plus, generous 500mm deep drawers incorporating the famous Stoneham controlled closure mechanism, are an original fitting on all standard base units.





Main: 'Pocket doors' retracted into their niches reveal creative functional interiors.

Left: Ambience V – American Walnut doors teamed with Vert Studio wall panelling and bar niche.

Top left: Aspen – Cashmere and Sand Grey.

Darwin/Holwood



Dobsons

Darwin's unique combination of framed doors with brushed steel recessed finger pulls creates an elegant, contemporary classic kitchen design. The furniture is factory-painted in a palette of contemporary shades - our bespoke option provides endless possibilities for paint colours and recessed handle back plates.



Dobsons



Dobsons

Holwood



Holwood – smooth painted in a bespoke pale ivory hue, matched with a custom-designed island, painted in bespoke pebble grey. Coat/basket storage area also by Stoneham.



Holwood

The Holwood range, featuring flush surfaced doors and integral recessed handles, comes in a selection of different Oak and Walnut finishes – veneered or solid. Designed to offer you supreme style and individuality, Holwood includes multiple back plate varieties, including Steel, Macassar, Black and White Zebrano, Oak and Walnut.

With the option to personalise Holwood to any colour finish, the bespoke range will suit every colour scheme. Recessed handles give this range the understated style and finesse of a handle-less kitchen, without losing any of the practicality.

Main and right: Anthracite Oak, Brushed Steel recessed handle – framed with Anthracite Oak/Steel capping.

Bottom: The Holwood design is matched with Infinity Pro – Snow HG.





Elan

Elan features uniquely seductive lines of horizontally planked American Black Walnut, American Light, Fogged or Anthracite Oak. These much sought-after real wood finishes make a stunning statement when contrasted with steel appliances, tambours or plinths and black mirror or opaque glass façades.

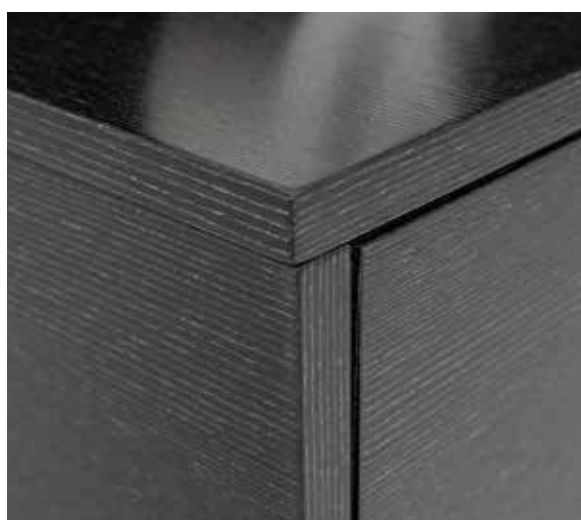
Right and bottom: Curved doors create a more fluid design. Olive Ash cones punctuate the island.

Below: The American Walnut drum unit incorporates a useful preparation sink.



Autograph

Autograph features a delightful collection of wood veneered surfaces for complete room designs or to add luxurious accents within a kitchen scheme or feature cabinetry. The options include Black and White Zebrano, Macassar, Black and Silver, Black Ebony, Smoked and Infused Oak.



Main and left: Black/Silver veneered surfaces have been selected for this floating TV cabinet and panelling. The subtle wrapped chrome pull provides discreet access to cabinet interiors.

Autograph



Bradburys

Autograph's unique collection of veneered surfaces permits the designer to create distinctive and beautiful furniture without constraints. The images show a specially commissioned kitchen in Eucalyptus high gloss finish – the designer has incorporated wall cladding, flush room doors and a bespoke wine chiller cabinet.




Bradburys



Far left: The curvaceous island in Eucalyptus high gloss finish includes a subtle J-Trim at the top of doors.

Near left: Wall panelling, wine cabinet and room door to utility area are specified in matching veneers.



For a stunning, seamless kitchen design, the Vibe range provides an uninterrupted flow between door trims. The veneered surfaces in horizontally grained American Black Walnut or Oak are available in several stained options. The impressive island design features multiple layered surfaces and introduces Fusion Pro with unobtrusive brushed steel handles.



Vibe





Vibe's integral J-Trim provides a discreet, yet functional handle to doors and drawers. The design can be combined to create a striking visual effect, with ranges such as Infinity, Flow or Fusion Pro, giving contrast and emphasis to adjacent furniture.

Main: Vibe – American Black Walnut base units are framed by Corian worktops and slab sides.

Left: The island in Vibe American Black Walnut contrasts with furniture in Flow Silk selected for the rear wall area.

Bottom: Vibe – Anthracite Oak. The beauty of oak graining revealed beneath a contemporary grey façade.



Cudham

Cudham's elegant, framed door features a slimmer profile and a subtle moulded inner frame detail. The façades and matching panelling can be specified in oak painted grained finish to provide subtle texture to the design. Alternatively, a smooth painted theme may be adopted throughout.

Stoneham's impressive range of finishes are factory painted with the option for fully bespoke colours too. A huge collection of accessories and features permit unlimited design possibilities.





Far left: Chimney breast detailing with antique mirror wall panelling.

Top left: Compact spice pantry in American Walnut interior provides rich contrast to Cudham's design.

Main and left: Island furniture – bespoke painted LG Cool Arbour. Tall Units – bespoke painted LG Serpentine.

Cudham

Cudham – a modern classic with fine detailing and subtle character for timeless living. Matched here with black mirror glass tall doors and a large breakfast island. The Moles Taupe façades are just perfect.





Strata



This striking Strata design lets the timber do the talking. In American Black Walnut with Macassar detailing to breakfast bar section and tall unit pilasters/capping, this is a Stoneham classic, designed for longevity beyond the transience of mere fashion.



Strata

Strata features a distinctive, wide-bevelled, solid timber frame, enhanced and elongated with horizontally-grained centre panels. Steel handles produce a clean-lined, linear look. Strata is also available in Oak, Walnut, smooth or Oak painted finishes including our fully bespoke factory painted option.

Strata stands out from the crowd. Its five-sectioned drawer fronts with angular profiles create a look that is both modern and unique. Add black mirror glass to wall and tall units for a dramatic effect. Vertical, bi-fold wall units reveal functional interiors with minimal door intrusion. Strata is the kitchen for today's discerning homeowner.





Above: The sumptuous bar unit is revealed by tall pocket doors tucked into their niches. Easily concealed at "closing time".

Left and far left: Glasses suspended on an Oak finger shelf. Vertical bi-fold doors provide unobstructed access.

Below: An imposing kitchen with circular Walnut table area to the island. American Black Walnut and Fusion Cashmere wall units capped by triple tier cornice.







This timeless Strata design combines Light Oak façades and Classic White painted features with accents to cornice and double quadrant columns.

Lullingstone

The “natural” appeal of Lullingstone, shown here in Character Oak, is in the individuality of the wood and the classic lines of its period-inspired design. But don't be fooled by appearances. Despite its unpretentious heritage and the use of traditional materials, this Lullingstone kitchen is a blend of uncompromising luxury, sophistication, function and design flexibility. Lullingstone is also available in Light Oak and Character Oak finishes.

Main: The circular solid Oak breakfast table is integrated within the island design featuring a cylindrical table support with attractive stainless steel collar.

Below and right: All framed doors feature a subtle vertical flute on the frame, adjacent to the centre panel.





Aspen



Main: Aspen OP – Base units in Blue Hague OP, wall units in Classic White OP with Light Oak detailing. Milled solid black nickel handles.



Aspen

A design classic. Sturdy framed doors made from Solid Oak or Walnut are matched with vertically grained veneers. The finish options include normal, stained and oak painted surfaces.

Aspen fits perfectly with modern living in contemporary apartments, traditional homes, and architecturally featured properties. The clean lines match steel plinths and handles particularly well and combine superbly with muted and pale shades on wall units.



Main: American Black Walnut with a specially commissioned table surface in Starburst Macassar veneer. Flow Silk – Lead wall units.

Left: Fine detailing – Oak dovetailed drawers.

Middle left: Legrabox drawers/ambialine drawer dividers. Perfection in motion.

Bottom left: Solid Oak cutlery dividers for drawer organisation.





Edwardian



RDO

Edwardian's simple, elegant framed doors provide a perfect blank canvas for creative design. Factory-painted in an impressive selection of contemporary colours or painted in situ, to match other features in your room, the result will be a highly individual kitchen. Stoneham offers a mouth-watering menu of accessories to accentuate Edwardian's design features and introduce shape, flow and definition to the room. A host of innovative storage solutions make Edwardian as functional as it is beautiful.



RDO



Main and left: Edwardian – Dove Grey smooth painted furniture with contrasting Blue Hague (SP) to island and glass backsplash. Flow Steel handles complete the design.

Far left: An impressive solid, Walnut table is part of the island design and supported by a matching cylindrical column.

Edwardian





Edwardian furniture shown here in Blue Hague (SP) base units and Classic White (SP) wall units. The designer has created a freestanding appearance to the furniture by clever use of panels and plinth separation. Open shelving, pendant lights and brick tiling effect provide a slightly industrial tone.



RDO

Mode's beautiful oak grain sits conspicuously beneath the optional painted or stained finishes. Add drama and mood with Thunder Grey or Anthracite Oak (shown here), Blue Ashes or Blue Chalk for a gentle pastel effect. For a neutral theme Cashmere or Dove Grey are perfect. All offer tremendous scope for the designer and can be combined effectively with Infinity, Diffuse or Fusion ranges for further contrast. Interiors are similarly inspired, carefully organised to be functional and beautiful.

Main and right: The substantial island in Mode Anthracite Oak and mirrored doors to rear encapsulated by Corian surfaces. Three tier cornice features Black and White Zebrano detailing.

Far right: Bridge Chrome handles illuminated by concealed LED worktop lighting.



RDO

RDO

If you're seeking a contemporary twist on a classic kitchen, look no further. Black mirrored glass, a three-tier curved island with Black and White Zebrano cornice detailing – sophistication doesn't come higher than this. Bespoke details such as the triple layer worktop echoing the cornice appearance and solid Anthracite Oak T handles add charm and personality. The inclusion of brushed steel brings an appealing contrast to the componentry.

Like all Stoneham ranges, mixing and matching is the name of the game. Choose from an expansive range of luxurious materials, including glass, steel, veneer and solid timber, then incorporate the latest appliances and storage technology to create a kitchen, which is truly your own.



Top and bottom far right: This substantial island in Anthracite Oak and steel, features a three-tier curved design and niche seating.

Below: Anthracite Oak units with Black and White Zebrano capping. Bespoke solid T bar handles.

Right: Three-tier worktop with centre steel section.





Ambience/TT/Pro



Main: Ambience Vertically grained American Walnut matched with solid brass milled handles and Vert Studio wall panelling (T&G horizontally) and island panels.







Ambience features beautifully grained natural veneers in American Black Walnut or Oak. Specify Fogged or Anthracite Oak for a more muted tone. And you can choose between a horizontally or vertically planked veneer. The TT trim adds a subtle, yet highly practical, pull handle. Pro Trims give a horizontal linear appearance, combining different textures and colours.

It's a look that gives you the freedom to express your individuality and create a breathtaking modern kitchen.

Main and top right: Ambience American Black Walnut – Pro Trim matched with Fusion Pro – Classic White and Macassar detailing.

Above and bottom right: Horizontally grained wall units in American Black Walnut veneer with Brushed Steel TT Trim. Infinity – Snow HG island and base/tall units.



Touch

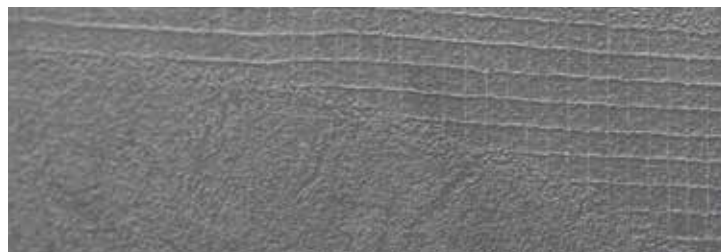
Main: Black TX surfaces add drama to tall units.

Bottom left: Jupiter TX – an alluring abstract design with pizzazz.

Bottom right: The inside story – capacious internal drawers – perfect access and supreme functionality.



A unique collection of door surfaces combine stunning textures with contemporary colours and outstanding practicality. Touch can be specified as a complete room theme or combined with timber or plain colour to great effect.



Infinity/TT/Pro





Infinity inspires highly contemporary design. The choice of eight high gloss surfaces all feature a matching 3D effect glass edge. If the scheme you are seeking is monochrome or pastel shades, this is a design without constraint.



Main: Monochrome design study with an abundance of modern appliance technology and clever storage solutions.

Top: Low level media cupboards complete the room design.

Above: Under-mounted sink with waste disposal air switch and filtered water SWICH®.

Right: 60mm Quartz surfaces incorporate LED under-lights and a retractable extraction hood.



Infinity/TT/Pro





The Infinity design combines well with other colours for contrast, or with timber if the appearance is to be softened slightly. Mixing colours and textures not only adds personality to your kitchen, but creates a wonderfully eclectic look too. The beauty of Infinity is that the design options are almost... well... infinite.

The Infinity collection comes in a spectrum of contemporary surface colours, and incorporates a comprehensive selection of Stoneham's standard and premium handles. Alternatively, opt for a Brushed Steel TT style Trim or Pro Trim for a sleek finish.

Main: Infinity Pro – Snow HG and Holwood – Anthracite Oak/Steel.

Top left: Infinity – Cloud HG with Autograph Black and White Zebrano accents and Raspberry glass breakfast bar – a final touch of pizzazz.

Bottom middle: Black and White Zebrano accent with sculptured handle adds a luxurious touch.

Bottom right and left: Pro Trim to doors.



Diffuse



David Haugh



Diffuse is the perfect design partner for timber or abstract surfaces or for complete room schemes. The super-matt finishes with matching edges are available in popular neutral tones. For real impact specify Graphite or Fjord for a relaxing cool theme. Featured here is Diffuse Cashmere furniture with touch to open function. The island design is softened with bespoke curved shaping in Anthracite Oak.

Flow

Flow provides a look and feel that is smooth, uncluttered and striking in its clean simplicity. Beautiful smooth painted façades with integral J-Trim deliver a minimalist, uninterrupted finish that is both streamlined and timelessly classic. In keeping with the minimal aesthetic, Fusion doors with partially recessed handles complete the tall unit run and utilise the full wall space.





Main: Large island specified in Pipe Grey, 20mm Dekton Nilium worktops and Dove Grey tall units.

Far left: Storage pantry in American Walnut can be swiftly concealed by pocket doors - shown tucked into their niches.

Left: Streamlined, uncluttered, symmetry.

Fusion





As the name suggests, Fusion is the perfect base for uniting colours, texture and surfaces for a highly creative look. Its simple design is equally effective when specified as a complete room concept or blended with other ranges to contrast or accentuate selected areas or features. Stoneham has the palette, design skill and technology to create your kitchen in the hues you choose, complemented by the textures and materials that will complete the perfect picture. Just pick a colour.

Main: Fusion Vert Studio accents to back panelling and island combined with Ambience V – American Walnut.

Left (top and bottom): Vert Studio is a powerful yet fresh contemporary shade.

Below: Milled solid brass handles blend beautifully with stronger colours.



Fusion

Fusion – Sink run and tall units in striking Blue Hague. Push to open doors for a seamless façade.





Fusion





Main: Thunder Grey – base and tall units matched with Dove Grey wall units.

Left top and bottom: American Walnut dovetailed drawers and glass sided Legerbox drawers on Dynamic Space Tower for perfect visibility of contents.



Fusion Pro



David Haugh

This amazing social living space features Fusion Pro in Dove Grey. Modern, clean lines are punctuated by Macassar accents to island surrounds and panelling to end of unit runs. Seating in abundance for plenty of guests!



David Haugh



David Haugh



Understated simplicity – the subtle outer groove detail on the Pitch range, surrounds the perimeter of all panels. A smoother façade than a fully framed door and arguably more eye-catching than a totally plain design. Available in smooth or oak painted finishes – the design combinations are limitless for individuality.

Main: Cabinetry specified to both sides of the fireplace in Pitch – Lead SP with Milled Nickel handles.

Below: Black Oak floating shelves with integrated LED lighting creates a comfortable room ambience.



Ligna

The subtle timber effect grain structure combined with six hard wearing, plain colour surfaces are totally on trend for the contemporary kitchen. Create accents in contrasting materials for open shelving. Integrate architectural features, appliances and seating for a soothing balance. Design without constraint.





Fahrenheit/TT/ Pro

Fahrenheit encompasses a collection of latest generation contemporary surfaces including stone, concrete and timber with synchronised structures. Mix and match plain colours with abstract patterns. Integral handles provide a streamlined appearance or choose from our latest collection of contemporary handle colours and shapes. The design possibilities are limitless.



Main: Float concrete doors to base units, Cloudy Oak wall units and Pentimento wall cladding. Tall units in Autograph Black/Silver veneer.





The Heritage Collection

Classical in-frame styles

Built to last, designed to make a lasting impression

Characterised by its in-frame construction, a kitchen from the Stoneham Heritage range imbues a sense of solidity and long-standing values. Fine materials and time-honoured detailing combine with integrated design features to deliver a look that is classic but capable of endless variation. Traditional and contemporary styles are available, all with the latest kitchen technology, incorporating innovative features and fittings designed to enhance functionality and maximise efficiency.

Whatever your choice, you can be sure your Heritage kitchen will delight you and your family, add style and value to your home and stand the test of time.

Main: Knole kitchen in bespoke Connaught Blue with brass hinges and handles.

Below: Walnut detailing adds further luxurious allure to the pot rack and mantle shelf with corbels.



Knole Painted

The hub of the home – this Knole kitchen is spectacular in F&B Railings. It provides a most elegant, practical and homely environment for all the key activities in the home. Cooking, eating and socialising – creating many memories for years to come.

Top : A bespoke bar unit in solid/veneered Light Oak is revealed by pocket doors – retracted into their niches.

Middle and bottom: The large island features a pot rack in slatted solid Oak and worktops with concealed LED lighting – emitting a soft ambient glow at night. Plug-in integrated into the furniture frames.



Penshurst Painted

In this example – tall units to rear wall painted in Cornforth White. Island units and fitted lounge furniture in Mole's Taupe. Worktops in Corian Glacier White – Double Roman edge profile to island.







Elegant and timeless with in-frame detail, Penshurst Painted is a true modern classic. Impressive, practical islands with panelled end columns, walnut open shelving and wine racks, partially glazed wall units and wide functional drawers combine to stunning effect.



Penshurst



Main and below right: A magnificent island in specially commissioned Burr Oak centre panels set amidst light oak frames.

Top right: Character Oak's beautiful random grain in evidence on this island, flanked by corner columns.

With its moulded frames and fine features, Penshurst is a timeless classic. It combines traditional craftsmanship and in-frame styling with contemporary materials and high-tech features to maximise access, convenience and storage capacity. Available in Oak, Character Oak, Walnut and bespoke painted finishes.



Scotney



Scotney is a classic in-frame kitchen that will add a touch of elegance to every house. Centre panels on doors are raised to provide exceptional detail and our repertoire of factory finished, smooth painted surfaces permit total personalisation. Beautifully panelled surfaces to island and intricate feature plinths add spectacular refinement.



Scotney





Main and above: Large storage areas can be swiftly revealed or concealed by vertical Bi-fold door units. Shown here with a walnut veneered interior. T-shape island design – the focal hub for cooling, prep, dining and entertaining in style.

Left: TV and media areas form part of the overall room design in a modern kitchen.

Below left: Charge your phones, tablets and other devices within the drawer. Discreet cable concealment and wonderful phone-free amnesty at the dinner table!

Below right: In-worktop bottle chiller, a perfect temperature for your favourite tipples!



Scotney

The Scotney kitchen with its raised centre panels incorporates a chimney breast feature with niche shelving apertures. Tongue and groove panelling forms the island end and rear section.





Ightham





Ightham incorporates the beauty of solid Oak frames and Oak veneered panels with greater emphasis on the graining. The grain is enhanced by a brushing technique to provide a distinct structured finish which is then visible beneath the painted surface. Our broad palette of colours can be further supplemented by the bespoke paint colour option for a truly individual kitchen. The square-shouldered frame provides a crisp, fresh façade that is timeless in its appeal.

Main and top: Ightham's striking enhanced oak grain is evident beneath the Mussel Painted façade.

Bottom: Extra width polished nickel cup handles combine with matching knobs to enhance Ightham's timeless appeal.

Bewl

The in-frame Bewl range features flush doors combined with the classical framed surround. Oak grained or smooth painted facades can be finished in colours from our sumptuous palette or a fully bespoke shade of your choice.





Bewl





Left: This beautiful converted old mill set beside a stunning river view inspired the choice of colours and the vibrancy of the dawn of spring. Bewl furniture in Chalk Blue and F&B Pitch capture this theme perfectly.

Above: For a lovely property overlooking the coast, the oak painted structured door from Stoneham's Bewl range were selected in Starry Host – a sea inspired blue shade. Other cabinetry was finished in Mussel. Accessories and worktops were carefully selected to continue the feel of a traditional bright sea hut.

Marlborough

Marlborough's marriage of innovative design and traditional craftsmanship creates an environment that is both invitingly contemporary yet pleasingly classic. Matched with steel, black mirror glass and polished granite, the rich hues and lustrous grain of American Black Walnut are sublime.



TEC Lifestyle



TEC Lifestyle



Above and right: Contemporary yet classically framed furniture in Marlborough range form this imposing central island design finished in Anthracite Oak. Shown here with 3 tier curved back panelling to island seating area with Black and White Zebrano centre detailing.

TEC Lifestyle



Beyond The Kitchen

Beautiful furniture

At Stoneham, we receive frequent requests from our customers to create fitted furniture for many other rooms, beyond the kitchen. Whether it's a playroom, a bar, a study, a media room for all the family, a bathroom or bedroom, we have the experience, the technical know-how plus all the creativity to provide you with an outstanding, fully bespoke service.

Our discerning buyers and production designers have access to some of the finest veneers, timber and innovative technical fittings, and can provide beautiful, functional storage solutions throughout the home.



Kitchens International, Aberdeen

- 1:** Working from home. Integrate a suitable space with the room design.
- 2:** Clever use of panelling to blend TV's to the kitchen and conceal all cables.
- 3:** A dedicated media wall - cabinetry, shelving and lighting to blend with the kitchen design.



TEC Lifestyle

4



5



TEC Lifestyle

6



Stonebridge Interiors

7



Stonebridge Interiors

8



Stonebridge Interiors

4 and 5: A sumptuous bathroom with floating walnut cabinetry and discreet pull handles.

6 and 8: A bathroom peninsula softened by curved cabinetry and recessed handles – shown here in Vibe – Anthracite Oak.

7: Boot room/utility areas. A place to conceal sports and school bags, shoes and coats.

Beyond The Kitchen

- 1: Home Bar – a relaxing tipple in comfortable surroundings.
- 2: The boot room seat, the “naughty” seat or just the secluded reading seat within the kitchen. Shown here with T&G panelling.
- 3: Wine storage in American Black Walnut.
- 4: Stunning circular bar design in Black Walnut, Macassar and Satin Walnut, Corian and solid Black Walnut bar surfaces.
- 5: Pocket doors conceal an in-cupboard preparation area with sink and tap.
- 7: A substantial bespoke table base with internal tunnel. Finished here in American Walnut veneer and Quartz work surface.
- 6 and 8: Bespoke circular seating base and back surrounds. Individual Oak table pedestal (bottom right) with steel collar. Upholstery by client.



Stonebridge Interiors

Kitchen Design of Sevenoaks

5



Kitchens International

6



Dobsons

7



Dobsons

8



Kitchens International

Beyond The Kitchen

Main: Bedroom robe units – Anthracite Oak.

1: A Sepia Oak walk-in dressing room with bespoke garment hanging and storage drawers.

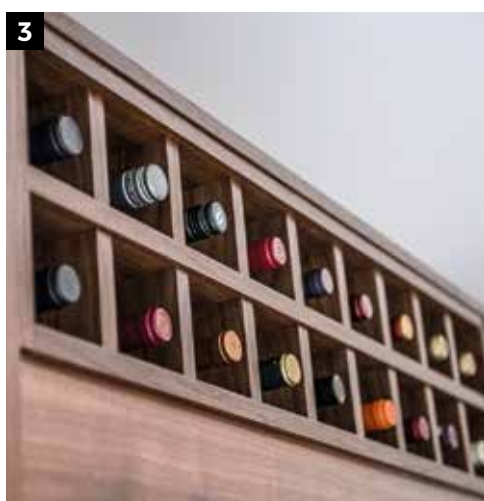
2: Study and file shelving units in Anthracite Oak. LED lighting incorporated within the shelving.

3: Wine storage in American Black Walnut.

4: Lounge – low level cabinetry in American Black Walnut.

5: Floating shelves, antique mirror panelling, and discreet LED lighting are important in this gorgeous “drinks” area.

6: Fully bespoke Light Oak open shelving and handle-less storage cupboards in this library area.



Its All In The Detail

So often the inclusion of a specific design detail, be it a shape or an exotic material, can make a significant difference to a room. Just as a little jewellery can enhance the simplest of garments, so it is with furniture. Consider veneer inlays in Ebony Macassar, Burr Oak or Pippy Poplar. LED lighting can be carefully concealed beneath work surfaces or flyover shelving, while mirror glass adds a gloss surface in an otherwise textured design. Even engraved names on chopping boards or drawers can provide a flourish of individuality. Our approach to furniture making will make your experience a very personal one.

- 1: Panelled ends to unit run and vertical frieze above the cabinets.
- 2: Door accent in Black and White Zebrano.
- 3: Double quadrant pilaster and cornice. Light Oak and White accents.
- 4: Flyover shelving in Walnut/Ebony Macassar with mini LED lighting.
- 5: Tall bottle niches flank an integrated fridge/freezer. Backlit by LED lighting.
- 6: Burr Oak veneer adds natural beauty.
- 7: LED lighting radiates via clear glass worktop edge above curved units.
- 8: Internal dovetailed drawers in American Walnut.



9: Triple layer pillars and Walnut cornice, complete with mirror-effect polished steel. A beautiful frame for your kitchen units.

10: Eye-catching double quadrant pillars matched with Black and White Zebrano cornice.

11: Open pot rack for the classiest islands. American Walnut contrasts superbly with painted accessories.

12: Cruciform wine racks – shown here with back lit panelling.

13: Engraved names on chopping boards, drawers and accessories personalise your room.

14: Worktop support cone in dramatic Olive Ash.

15: A simply exquisite three-tier island with the opportunity to add interesting shapes, LED lighting and contrast materials.

16: Black mirror glass frontals in Light Oak frames conceal this Gaggenau fridge/freezer.

17: Solid brass milled handles, dovetailed joints – it's all in the detail.

18: A bespoke "Lazy Susan" in solid Iroko. Names engraved to your requirements.





The inside story

Evident in the design and manufacture of our kitchen ranges, Stoneham's attention to detail applies in equal measure to our selection of the finest kitchen accessories, appliances and features. This accessories section shows a host of clever, efficient, space-saving ideas to make your kitchen as practical as it is beautiful.

ARENA

Arena® is the latest innovation in kitchen storage, providing improved functionality for shelving and baskets. The contemporary, sleek, steel chrome bands surround an anti-slip shelving system that limits the movement of stored objects while opening and closing doors and accessing cupboard interiors.

Main: This magnificent pantry unit – commissioned with Oak Veneered interiors, solid oak dovetailed drawers with scooped handles and engraving. Spice racks fitted to upper doors.

1: Chrome steel bands epitomise the minimalist styling – Arena®.

2: The impressive anti-slip shelf system is a standard feature throughout the Arena® range.

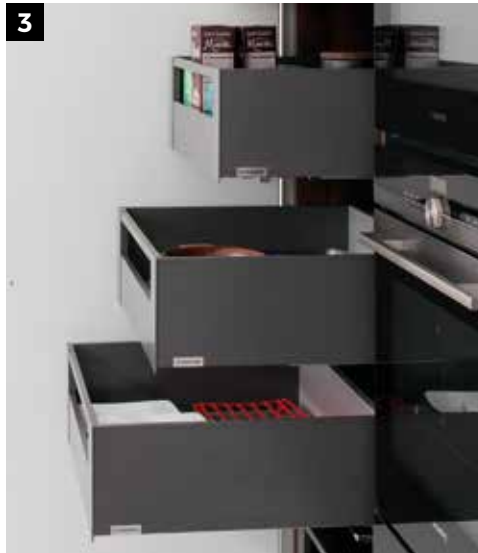
3: The magic corner unit glides into view with its impressive anti-slip shelf system – Arena.

4 and 5: The remarkable Le Mans carousel makes storage simple and completely accessible for base and intermediate height units. The magic corner unit glides into view with impressive anti-slip shelf system – Arena®.

6, 7 and 8: These cleverly designed slimline pull out units are suitable for bottle storage, towel rail, cooking trays and racks. At only 150mm width they are most useful.



Be creative... Mix and match a wide range of accessories and storage solutions



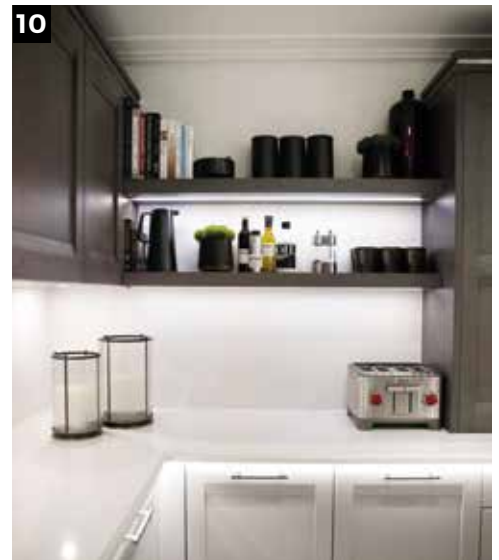
- 1:** Legrabox internal drawers. Effortless access to storage.
- 2:** Dynamic Space Tower. Glass sided Legrabox 'FREE' drawers for enhanced visibility.
- 3:** Tall units with internal storage drawers. Supreme storage access and 40kg capacity per drawer.
- 4 and 5:** Legrabox drawer with Orgaline storage dividers - magnetically positioned to drawer sides.
- 6:** Dynamic Space Tower. Everything to hand immediately.
- 7:** The pull-out table is an excellent solution for extra working space. Choice of two models.
- 8:** A pull-out for small spaces.
- 9:** Intermediate height pull-out storage.
- 10:** Splayed curved drawers with cutlery dividers.
- 11:** Pull-out base storage units feature anti-slip shelving.
- 12:** One of many waste bin solutions by Stoneham. Waste segregation and re-cycling made easy.
- 13:** Pull out storage trays with finger jointed detail.
- 14:** Concave curved drawer provides effortless storage access.
- 15 and 16:** Dovetailed drawer box construction with a solid wood divider.





Storage





- 1:** Supreme accessible storage with the Lavidio pull-out storage – 170kg capacity soft open/soft close (left) and the pantry system with separate door racks (right).
- 2a:** Convoy Primo Larder. View and reach the contents of your larder with ease. 130kg capacity and anti-slip shelving too.
- 2b:** Pull-out pantry – superb for accessing smaller width tall units.
- 3:** Bespoke drawer interior for Nespresso capsules.
- 4:** Drawer storage units. Each individual plate organiser lifts out.
- 5:** Fitted as standard, the sink unit drip tray prevents damage to cabinet interiors or structural joints that could be caused by accidental spillage.
- 6 and 8:** Vertical bi-fold dressers reveal and conceal swiftly. Storage for kitchen appliance or even microwave integration.
- 7:** Vertical bi-fold doors and cabinetry used to conceal a hatchway between rooms.
- 9:** Glass shelving makes good use of a corner niche.
- 10:** Floating shelves with integrated LED lighting.
- 11:** The shallowest of spaces can be brought to life and have purpose.
- 12:** Base unit with concealed inner drawer at top.
- 13:** Legrabox 'FREE' glass sided with oak dovetailed top drawer.

Utility/Concealment

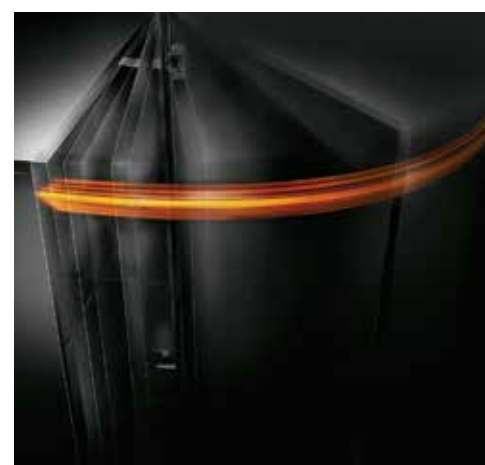




Control Technology

Perfecting motion for doors Soft-close BLUMOTION

With BLUMOTION you'll never again have trouble closing kitchen doors or drawers. Whether it's a door, a shallow cutlery drawer, or a deep and wide storage drawer, with the BLUMOTION system, the result is a soft, controlled and slam-free closing action every time. Even the smallest doors close with one silent and graceful action. Simply switch BLUMOTION on or off.



With integrated BLUMOTION, the perfect motion is achieved when opening and closing. Drawers and high-fronted pull-outs can open automatically using an optional electrical drive. A light touch or light handle pull creates freedom of motion and high opening comfort.

1 and 2: Vertically stacked washing machine and tumble dryer – saves floor space. The Butler sink is practical and capacious.

3: Conceal boiler, pipes and valves in purpose built units. Removable internal panels for servicing access.

4: Boot room. An organised space for coats, boots and outdoor paraphernalia.

5: Integrated dishwasher.

6: Freestanding washing machine concealed by oversized door and slim hinge arrangement.

7: BLUMOTION has also been integrated into the AVENTOS lift mechanisms used to control the elevation action on overhead cabinets. This adaptive soft-close system ensures faultless, soft and controlled closing of the overhead cabinet doors, no matter their size, weight or configuration. It means the door can be opened effortlessly, to any desired position, and closed with the slightest pull to secure a soft and safe re-seating of the door.

8: Wide folding fronts. If the lift mechanism is used on both sides, large, heavy fronts can also be used.

9: High quality lift motion with variable stop.

10: Base unit with concealed inner drawer at top.



Work Surfaces – granite, glass, timber...

Available in a wide choice of materials, designs and colours, a huge range of worktops will enable you to find exactly what you need to enhance your Stoneham kitchen. Solid timber, polished granite and stainless steel will help your kitchen exude luxury. Consider glass, in its many guises, for breakfast bars or other surfaces in room design. High-pressure laminates are particularly hard wearing, while the highly flexible Corian worktop can be moulded into drip trays, splash-backs and sinks for the ultimate in streamlined finishes.

- 1:** Stunning use of Quartz to worksurfaces, back panelling and island unit sides and rear. Solid walnut tops at multi-layers add definition and warmth to the design.
- 2:** Spekva solid brushed grained tops with oiled surfaces.
- 3 and 4:** Large island with Double Roman moulded edges – 60mm thickness.



5: This cylindrical-shaped unit features bespoke solid timber work surfaces shown here in American Black Walnut.

6: Three-tier island feature with glass breakfast bar feature.

7: A solid timber circular worktop overlays the island corner. Bespoke steel rings beneath.

8: Solid Walnut 40mm thickness bar area surmounts the distinctive Quartz tops.

9: Starburst Macassar work surface – bespoke veneering to your design

10: Neolith work surface with mitred built-up edge (100mm thickness)

11: Under-mounted steel sink with draining grooved in Quartz work surface.

12: Port sockets provide power supply to awkward spaces such as corners and island units. Simply push away when not required.

13: Flip top – power sockets rotate to a flush surface when not in use.

14: Solid Walnut teardrop-shaped breakfast bar fits snugly to the rear of a curved island.



Kitchens International



Stonebridge Interiors



Implementation – a total service



BY APPOINTMENT TO
HER MAJESTY THE QUEEN
FURNITURE MANUFACTURERS
STONEHAM PLC, SIDCUP, KENT.

Our philosophy is simple. Whether creating a totally new kitchen or extending or refurbishing an existing one, every project we undertake is as important to us as it is to you, for our reputation is at stake.



The decision to invest in a new kitchen requires thorough research, expert advice, in-depth discussion and the security of professional workmanship. Careful consideration on all aspects of design, installation, plumbing, electrics and interior decoration is essential. A Stoneham Appointed Kitchen Specialist makes this entire process a comprehensive, professional and seamless experience.

Something of a dream

From the moment you step into a Stoneham Appointed Kitchen Centre you will be surprised how easy and enjoyable the whole process is. Each spacious centre displays a wide selection of kitchens in room settings so you can see how different styles, colours and combinations can work in a home.

Every Stoneham kitchen is made to order which means that every Stoneham kitchen is an original masterpiece. Expert kitchen designers take time to guide you through the vast repertoire of accessories and features so as to match your kitchen perfectly to your needs.

With a Stoneham Appointed Kitchen Centre you'll be surprised how easy and enjoyable the whole process is.



Frequently listed as a major selling point in property advertising, the cachet of a Stoneham kitchen adds appeal and value.



Bespoke designs

If you want to preserve or enhance unusual architectural features, or even create a few new ones yourself, we undertake specially commissioned designs with great pleasure and enthusiasm.

With you every step

Every Stoneham Appointed Kitchen Centre offers a comprehensive professional service so you can choose as many or as few services as you require. But whether you opt for the whole design, installation and decorative service or prefer to work with your own sub-contractors, you can rest assured that your Stoneham kitchen will be crafted by hand and fine-tuned by technology.

Your first step

Our network of Stoneham Appointed Kitchen Centres is in place throughout England, Scotland and Wales to serve you. So, to take your first step, please call our sales line **020 8300 8181** or visit **www.stoneham-kitchens.co.uk** to find the Centre most convenient to you.



Sustainability



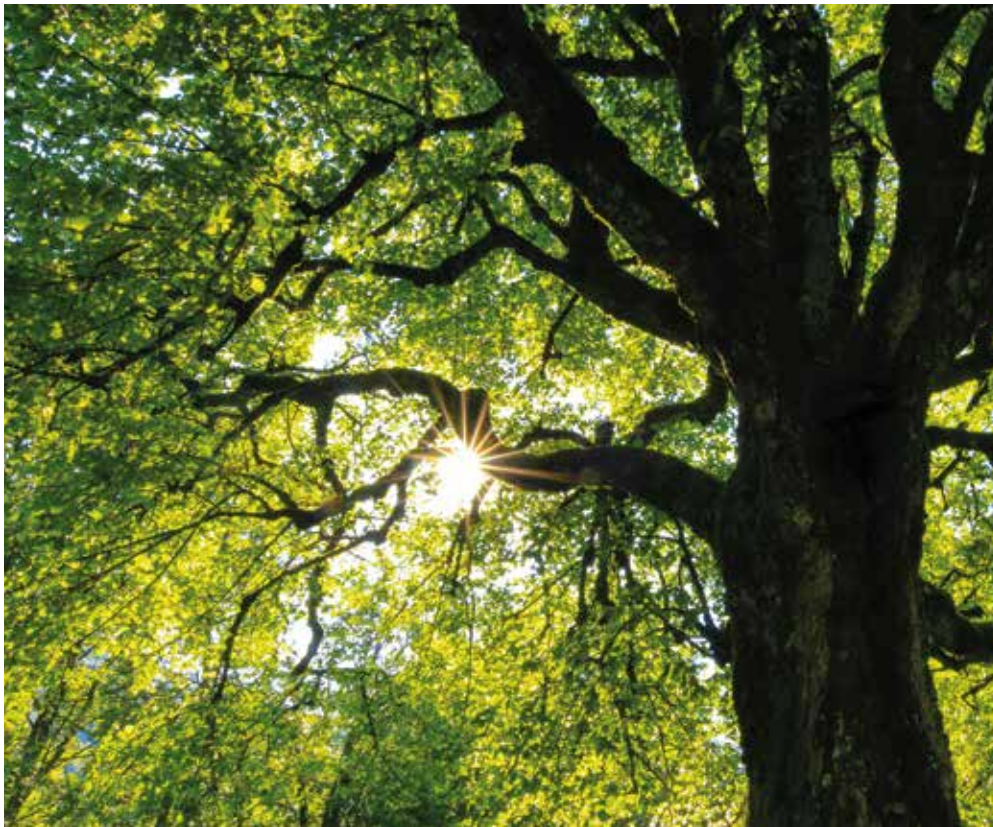
Stoneham's directors wholeheartedly recognise the imperative to be environmentally considerate, which is why in all areas of its activities and policies, Stoneham, supports ecological sustainability.

With best practices observed, wood products are the ultimate sustainable and recyclable materials, thermally efficient in use and requiring low energy consumption to process.

From our suppliers, we actively seek proof of their commitment to continuous improvement in environmental performance, information on the source of wood products and evidence of good forest management practice. As a company policy, Stoneham will only source materials from suppliers who are operating ethically within the laws of their countries. In areas such as transport, energy use, filtration plants, waste disposal and health and safety requirements, the company aims to adopt environmental standards that do more than just comply with legal requirements, but which go significantly further – to promote the highest environmental standards and fully integrate environmental considerations into our operational decision making.

In addition, Stoneham has been certified as a member of the BFM Health and Safety Certification Scheme, which is recognised by the Association of British Insurers.

Stoneham incorporates some of the finest materials and components available and the sheer longevity of our furniture means it will surpass whims of fashion and premature obsolescence. This alone is a most important statement in carbon footprint reduction.



The information contained in this brochure was accurate at the date of going to press. However, Stoneham reserves the right to alter prices and specifications and to withdraw units at any time. Timber and veneer are used extensively in our product range. Careful selection of materials is used. However, as they are natural materials a variety of grain structures and slight colour variations should be expected. The colours shown in this brochure are as accurate as the printing process allows. Designed and produced by Yello Fish Ltd. Tel: 07813 067675. Email: gretchen@yello-fish.com

Thank you

Every Stoneham kitchen is designed and built to meet the individual needs and tastes of our customers, so we simply don't have a warehouse full of furniture we can photograph. We only photograph kitchens in our customers' homes or those in our Stoneham Approved Kitchen Centres.

I therefore wish to express my sincere gratitude to all our customers who kindly granted us access to their homes. Without their support and understanding, we would not be able to show you many of the stunning kitchens you see in this brochure.

We very much look forward to working closely with you on your new project.

A handwritten signature in white ink that reads "Adrian Stoneham". The signature is written in a cursive style with a horizontal line underlining the name.

Adrian Stoneham



Stonebridge Interiors



BY APPOINTMENT TO
HER MAJESTY THE QUEEN
FURNITURE MANUFACTURERS
STONEHAM PLC, SIDCUP, KENT.

STONEHAM®

FINE FURNITURE SINCE 1864

Stoneham plc

Powerscroft Road, Footscray, Sidcup, Kent, DA14 5DZ, England.

Telephone: 020 8300 8181

E-mail: kitchens@stoneham.plc.uk

V: 06/21

www.stoneham-kitchens.co.uk

